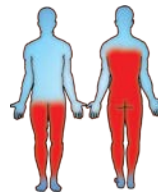


Caloo Limited, Unit 9a, Triangle Business Park, Wendover Road,
 Buckinghamshire, HP22 5BL, United Kingdom.
 Tel: +44 (0)1296 614 448 Email: info@caloo.co.uk



Caloo Workout - CW05 Cross Rider Duo

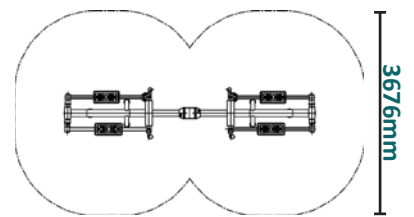


Suitable for
 users over
 1400mm tall.



Safety Spacing

6280mm



Certified by TUV to EN 16630

Unit Free Fall Height : 485mm

Area Needed: 6280mmx3676mm



This unit provides a full body cardio workout using the arms and legs simultaneously. Aimed at all ages, the Cross Rider Duo is perfect for trimming up and maintaining a healthy body and figure.

The Caloo workout Range features individual fitness stations which offer an environmentally friendly outdoor fitness facility. Each unit is designed to target a specific muscle group, creating a variety of activities which can create a full body workout or aid recuperation after accident or illness. Caloo Workout units are available in three attractive colour combinations : blue and silver, green and silver or red and yellow.

(Surface diagram to scale 1:100 on A4)
 (User diagram shows unit with a 1.8m tall adult)

