

Caloo Limited, Unit 9a, Triangle Business Park, Wendover Road,  
Buckinghamshire, HP22 5BL, United Kingdom.  
Tel: +44 (0)1296 614 448 Email: [info@caloo.co.uk](mailto:info@caloo.co.uk)

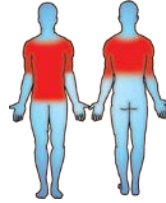


# Caloo Workout - CW10 Chin Up



Unit Dimensions (mm) LxWxH : 1710x1710x2140

Certified by TUV to EN 16630

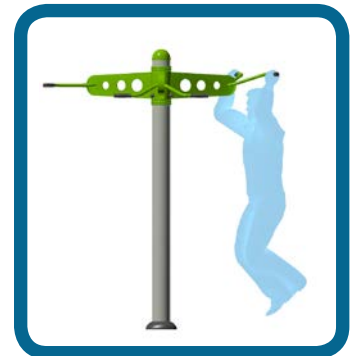
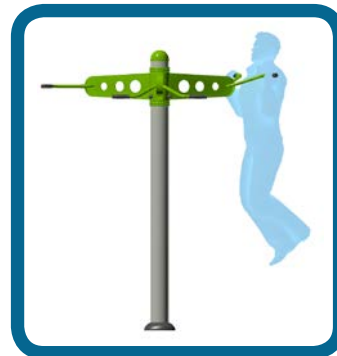
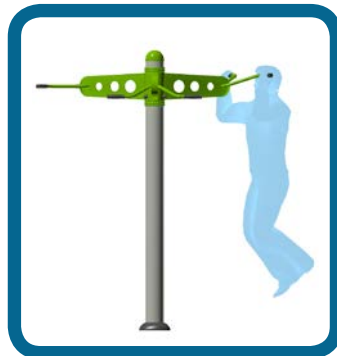
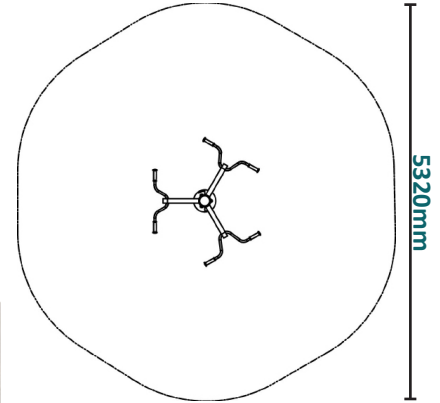


Suitable for users over 1400mm tall.

Unit Weight : 61kg  
Unit Free Fall Height : 1m  
Area Needed: 5320mm x 5320mm

**Safety Spacing**

5320mm



A simple item, but provides of the best exercises for building strength in the upper body.

The Caloo workout Range features individual fitness stations which offer an environmentally friendly outdoor fitness facility. Each unit is designed to target a specific muscle group, creating a variety of activities which can create a full body workout or aid recuperation after accident or illness. Caloo Workout units are available in three attractive colour combinations : blue and silver, green and silver or red and yellow.

(Surface diagram to scale 1:100 on A4)  
(User diagram shows unit with a 1.8m tall adult)

