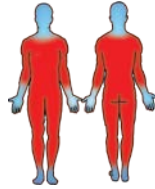


Caloo Limited, Unit 9a, Triangle Business Park, Wendover Road,  
 Buckinghamshire, HP22 5BL, United Kingdom.  
 Tel: +44 (0)1296 614 448 Email: [info@caloo.co.uk](mailto:info@caloo.co.uk)

# Caloo Workout - CW23 Cross Rider



Unit Dimensions (mm) LxWxH : 1140 x 700 x 1650



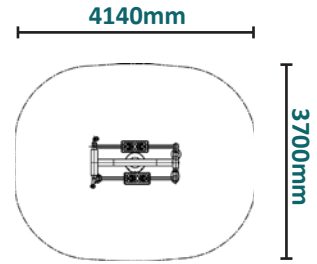
Suitable for  
 users over  
 1400mm tall.



Certified by  
 TUV to  
 EN 16630

Unit Weight : 60kg  
 Unit Free Fall Height : 485mm  
 Area Needed: 4140mm x 3700mm

## Safety Spacing



A full body cardio workout - using the arms and legs simultaneously. A perfect unit for trimming up and maintaining a healthy body and figure.

The Caloo workout Range features individual fitness stations which offer an environmentally friendly outdoor fitness facility. Each unit is designed to target a specific muscle group, creating a variety of activities which can create a full body workout or aid recuperation after accident or illness. Caloo Workout units are available in three attractive colour combinations : blue and silver, green and silver or red and yellow.

(Surface diagram to scale 1:100 on A4)  
 (User diagram shows unit with a 1.8m tall adult)

