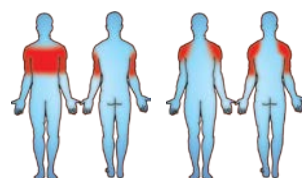


Caloo Limited, Unit 12, Boxted Farm, Berkhamsted Road,  
 Hemel Hempstead, HP1 2SG, United Kingdom.  
 Tel: +44 (0)8450558218 Fax: +44 (0)8450558219 Email: [info@caloo.co.uk](mailto:info@caloo.co.uk)



# Caloo Workout - CW62 Seatless Lat Pull/Chest Press



Designed &  
 Manufactured  
 to EN 16630

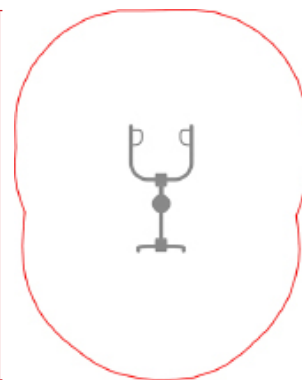
Suitable for  
 users over  
 1400mm tall.

Area Needed:  
 3900mm x 4900mm

### Safety Spacing

3900mm

4900mm



The Chest Press provides an upper body workout focusing on the chest and arms. The Lat Pull focuses on developing the shoulders and the triceps. This unit will develop and strengthen the muscles without the need for the user to leave their wheelchair. The arms of both the Chest Press and Lat Pull are fitted with dampeners for gentle resistance.

The Caloo workout Range features individual fitness stations which offer an environmentally friendly outdoor fitness facility. Each unit is designed to target a specific muscle group, creating a variety of activities which can create a full body workout or aid recuperation after accident or illness. Caloo Workout units are available in three attractive colour combinations : blue and silver, green and silver or red and yellow.

(Surface diagram to scale 1:100 on A4)

(User diagram shows unit with a 1.8m tall adult)

