

CW02 Chest Press

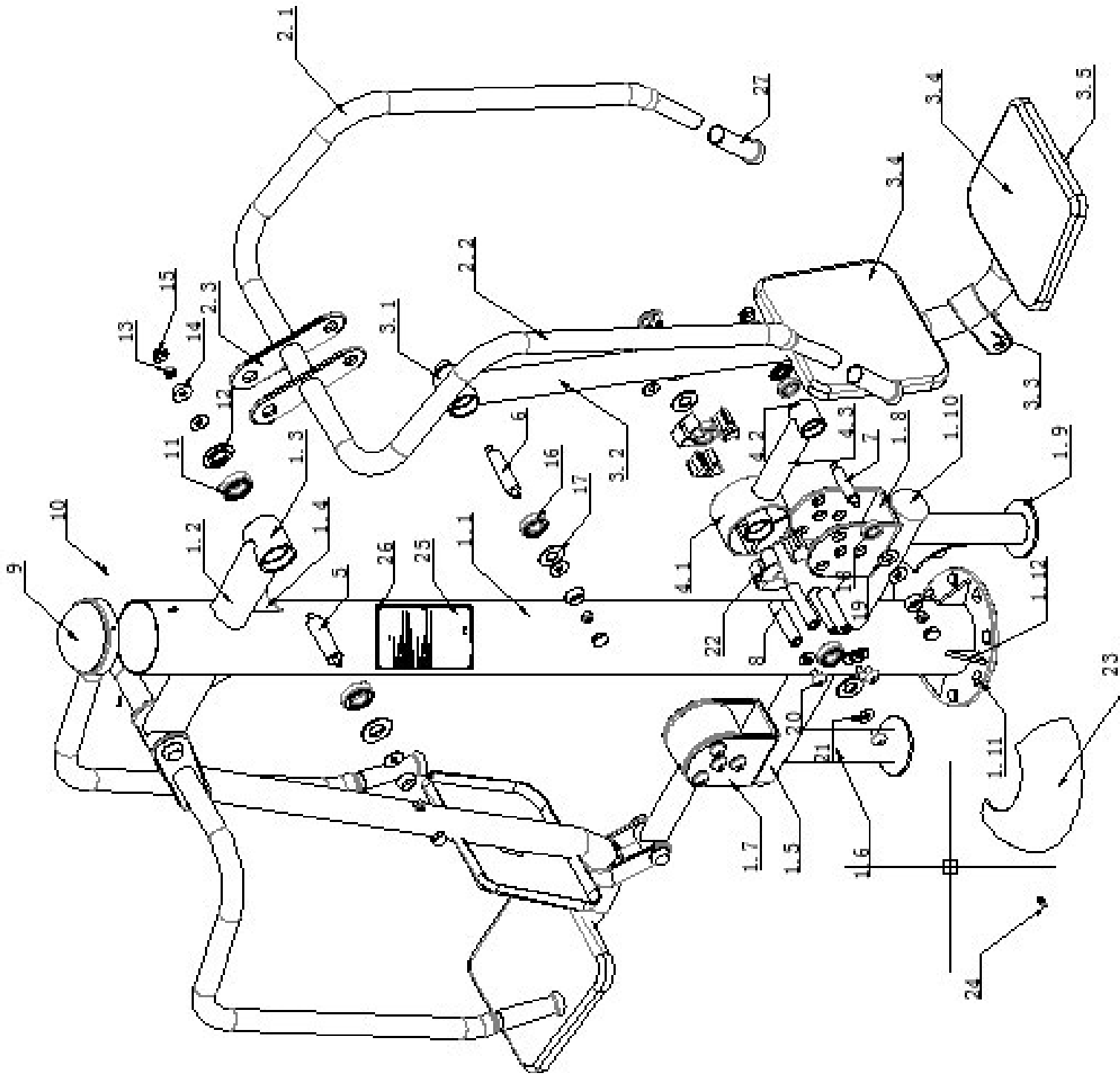
Component Number	Component Name	Size
1.1	Post	Φ114X3
1.2	Axle Sleeve Tube	Φ76X3
1.3	Axle Sleeve	Φ73X80
1.4	Rib Plate	Φ90X90Xt8
1.5	Connecting Pipe	Φ76X3
1.6	supporting tube	Φ60X3
1.7	Limit Side plate	181X136Xt10
1.8	Limit connecting plate	136X85Xt10
1.9	Around plate	Φ110Xt6
1.10	Welding plugging	Φ76
1.11	Flange	Φ260Xt12
1.12	Triangular Rib plate	50X60Xt8
2.1	Short Arm Bend	Φ42X3
2.2	Long Arm Bend	Φ42X3
2.3	Ear Plate	250X77Xt8
3.1	Axle Sleeve	Φ60X80
3.2	Seat Bend	Φ60X3
3.3	Box	50X55Xt8
3.4	Seat	325X300Xt4
3.5	Welding plugging	Φ60
4.1	stop collar	Φ135X80
4.2	Limit Sleeve	Φ139X5
4.3	Axle Sleeve	Φ50X55
4.4	Connecting Pipe	Φ50*5
5	Axle	Φ30X130
6	Axle	Φ25X130
7	Axle	Φ20X105
8	Axle	Φ25X100
9	Cover	Φ140
10	Rivet	Φ5X16

Component Number	Component Name	Size
11	Bearing	6206
12	Waterproof Washer	6206
13	Lock Nut	M12
14	Base	M12
15	Cap	M12
16	Bearing	6205
17	Waterproof Washer	6205
18	Bearing	6004
19	Waterproof Washer	6004
20	Anti-thief Bolt	M12X20
21	Yellow Pad	Φ37Xt2
22	Plastic stopper	
23	Foundation Cover	Φ140
24	inside hexagonal bolt	M8X20
25	Instruction	120X180Xt0.45
26	Rivet	Φ4X13
27	Handle Grip	Φ32



www.caloo.co.uk

Caloo Limited, Unit 12, Boxted Farm, Berkhamsted
Road, Hemel Hempstead, HP1 2SG
Tel: +44 (0)84505558218
Fax: +44 (0)84505558219
Email: info@caloo.co.uk



CW02 Chest Press