



**Age Range**  
Age > 14+



**No. of Users**  
1



**Free Height of Fall**  
> 2.29m



**Assemble Time**  
1 H



**No. of Activities**  
2



**Impact Area**  
19.7m<sup>2</sup>

# Push Up With Raised Legs

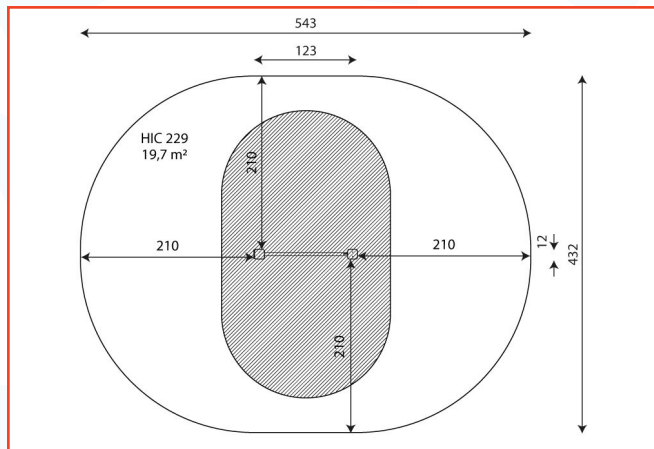
2309

Take push ups to the next level by encouraging outdoor gym users to raise their legs on the stainless steel bars whilst working their arms and shoulders.

Available in different colours  
(Additional charges may apply)



## Technical Information



## Materials



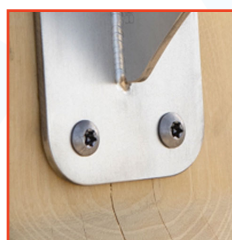
Powder galvanized and powder-coated or stainless steel construction of 100 x 100 mm profile, durable end caps on the top of the structure made of plastic.



Aluminum exercise instructions plate screwed to HDPE plate, resistant to weather conditions.



Stainless steel bars with a diameter of 38mm for a comfortable grip during exercises.



Stainless steel screws and/or screws covered with plastic caps.

## Surfacing

## Surface Measurements

Grass Matting

22.5m<sup>2</sup>

Grass Matting (Wear Area)

N/A

Wetpour

19.7m<sup>2</sup>

No safety surface required as critical fall height is less than 600mm. However, we suggest allowing an appropriate free space around the item in compliance with BS EN1176.

Data is subject to change without prior notice.