



Age Range
Age > 14+



No. of Users
1



Free Height of Fall
> 1.39m



Assemble Time
1 H



No. of Activities
2



Impact Area
17.2m²

Sideways Monkey Bars

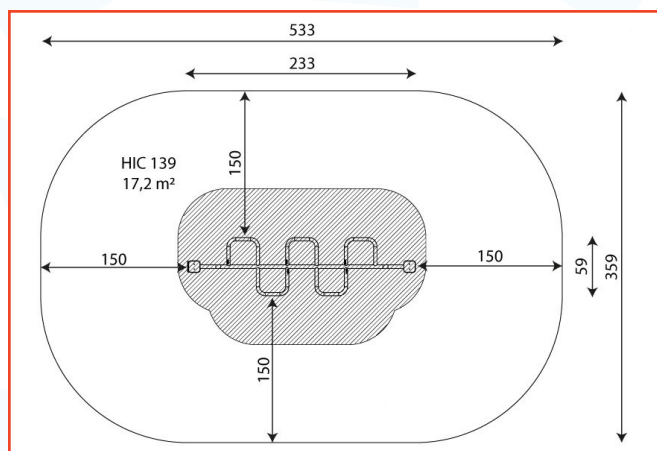
2315

A unique take on the traditional, these sideways monkey bars focus on the obliques whilst improving upper body and core strength.

Available in different colours
(Additional charges may apply)



Technical Information



Materials



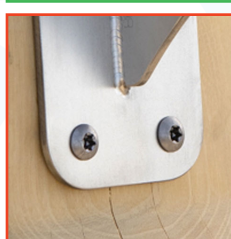
Powder galvanized and powder-coated or stainless steel construction of 100 x 100 mm profile, durable end caps on the top of the structure made of plastic.



Aluminum exercise instructions plate screwed to HDPE plate, resistant to weather conditions.



Stainless steel bars with a diameter of 38mm for a comfortable grip during exercises.



Stainless steel screws and/or screws covered with plastic caps.

Surfacing

Surface Measurements

Grass Matting

22m²

Grass Matting (Wear Area)

6m²

Wetpour

17.2m²

No safety surface required as critical fall height is less than 600mm. However, we suggest allowing an appropriate free space around the item in compliance with BS EN1176.

Data is subject to change without prior notice.